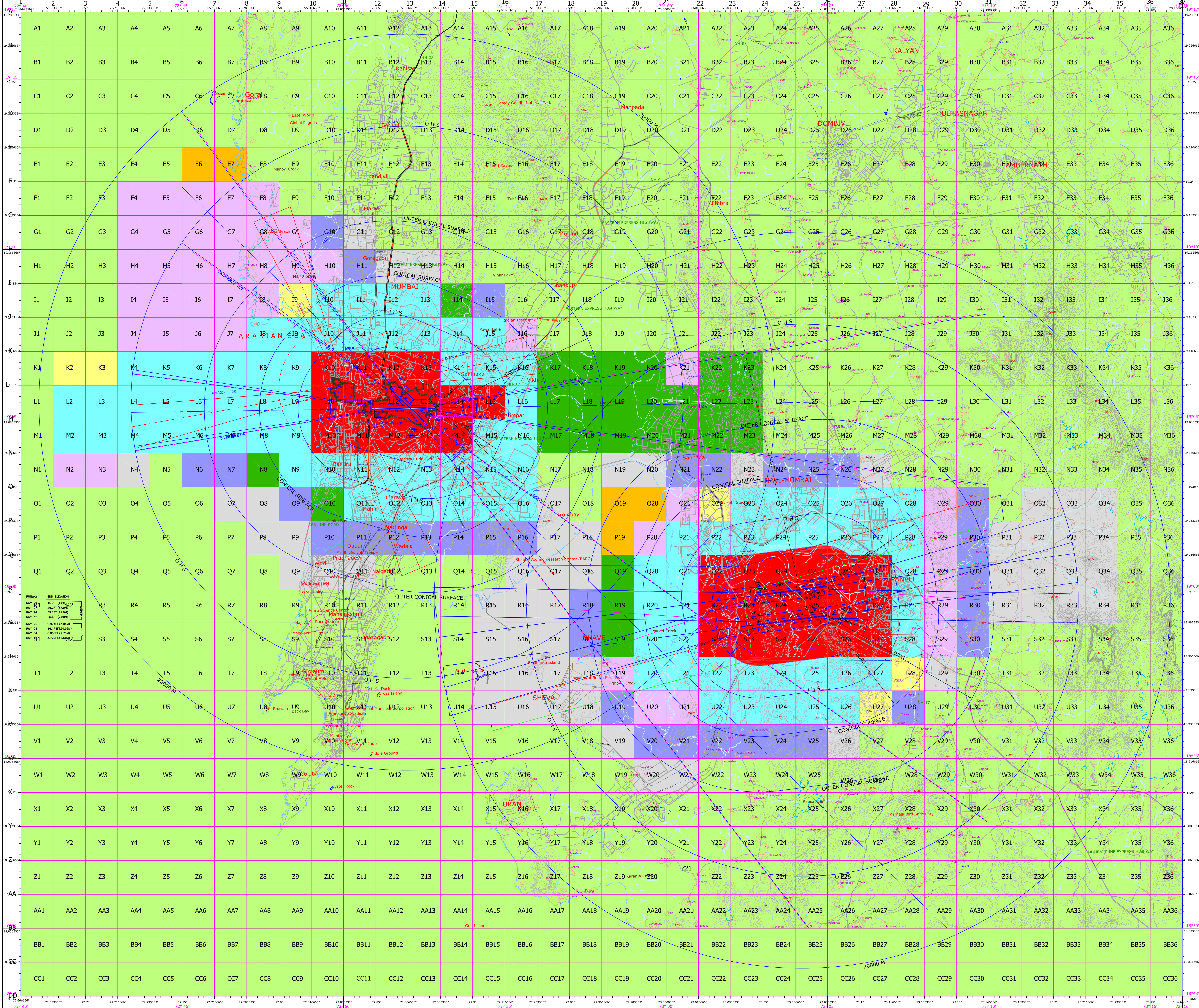


DATUM WGS-84

COLOUR CODING ZONING MAP OF MUMBAI & NAVI MUMBAI

MUMBAI AIRPORT LATITUDE 19°05'30.2"N LONGITUDE 72°51'52.8"E ELEVATION 33.47(115M) AERODROME REF 9811P(11.5M) RWY.08/26 3445M(60M) RWY.14/32 2871M(45M)	JUHU AIRPORT LATITUDE 19°05'51.2"N LONGITUDE 72°50'01.8"E ELEVATION 97(2.74M) AERODROME REF 9810P(2.7M) RWY.08/26 1143M(30M) RWY.16/34 732M(23M)	NAVI MUMBAI AIRPORT LATITUDE 19°05'39.78"N LONGITUDE 72°54'12.87"E ELEVATION 3700M(60M) RWY.08R/27L 3700M(60M)	LEGEND ROAD RAILWAY LINE RIVER/LAKE/TANK/ETC	LIST OF NAV-AIDS AT MUMBAI (WGS-84 SYSTEM) STA. NO. NAME LATITUDE LONGITUDE ELEVATION 1. GOMT 19°05'14.7"N 72°52'36.1"E 10M 2. MDR 19°05'14.7"N 72°52'36.1"E 10M 3. GOR 19°05'14.7"N 72°52'36.1"E 10M 4. GOR 19°05'14.7"N 72°52'36.1"E 10M 5. GOR 19°05'14.7"N 72°52'36.1"E 10M 6. GOR 19°05'14.7"N 72°52'36.1"E 10M 7. GOR 19°05'14.7"N 72°52'36.1"E 10M 8. GOR 19°05'14.7"N 72°52'36.1"E 10M 9. GOR 19°05'14.7"N 72°52'36.1"E 10M 10. GOR 19°05'14.7"N 72°52'36.1"E 10M	LIST OF NAV-AIDS AT NAVI MUMBAI (WGS-84 SYSTEM) STA. NO. NAME LATITUDE LONGITUDE ELEVATION 1. GOMT 19°05'14.7"N 72°52'36.1"E 10M 2. MDR 19°05'14.7"N 72°52'36.1"E 10M 3. GOR 19°05'14.7"N 72°52'36.1"E 10M 4. GOR 19°05'14.7"N 72°52'36.1"E 10M 5. GOR 19°05'14.7"N 72°52'36.1"E 10M 6. GOR 19°05'14.7"N 72°52'36.1"E 10M 7. GOR 19°05'14.7"N 72°52'36.1"E 10M 8. GOR 19°05'14.7"N 72°52'36.1"E 10M 9. GOR 19°05'14.7"N 72°52'36.1"E 10M 10. GOR 19°05'14.7"N 72°52'36.1"E 10M	SCALE = 1:50000 METRES FEET * ALL ELEVATIONS AND DIMENSIONS ARE IN METRES. * ALL GEODENICAL COORDINATES ARE IN WGS-84 SYSTEM.
---	---	---	--	---	--	---



COLOUR LEGEND 50M PERMISSIBLE TOP ELEV. 50M AMSL OR BELOW. 60M PERMISSIBLE TOP ELEV. 60M AMSL OR BELOW. 75M PERMISSIBLE TOP ELEV. 75M AMSL OR BELOW. 85M PERMISSIBLE TOP ELEV. 85M AMSL OR BELOW. 105M PERMISSIBLE TOP ELEV. 105M AMSL OR BELOW. 115M PERMISSIBLE TOP ELEV. 115M AMSL OR BELOW. 135M PERMISSIBLE TOP ELEV. 135M AMSL OR BELOW. 150M PERMISSIBLE TOP ELEV. 150M AMSL OR BELOW.	NOTE: 1. THIS CCZM HAS BEEN PREPARED IN ACCORDANCE WITH ICAO DOC 8168 PART 1 IN RESPECT OF OBSTACLE LIMITING SURFACES OF MUMBAI AIRPORT AND DOES NOT INCLUDE JURISDICTION OF DEFENCE AIRPORT. LOCAL AUTHORITIES MAY REFER TO DEFENCE AUTHORITIES IN CASE OF ANY SITE FALLS WITHIN JURISDICTION OF DEFENCE AIRPORTS. 2. THE HEIGHT PERMITTED BY CCZM ARE INDICATED ABOVE MEAN SEA LEVEL (MSL) ABOVE GROUND LEVEL (AGL) HEIGHT OF BUILDING / STRUCTURE PERMISSIBLE = CCZM HEIGHT - SITE ELEVATION. 3. FEED BACK ON CCZM SOLICITED FROM CONCERNED NOC CELL, AERODROME OPERATOR AND LOCAL AUTHORITIES.
--	--

VERSION NO. - 2.3	DATE - 20-06-2016
PREPARED BY - S.K. SURI	(SHARDA KHANNA)
CHECKED BY - S.K. HANGAR (CARTO)	(LAPAT BAI)
RECOMMENDED BY - J.T. GHOSKAR	(D. BADDOLA)
APPROVED BY - S.K. PURWAR	(S.K. PURWAR)

ORG. NO. AAJ/36-CCZM/MUMBAI/2015/CARTO